



Customer: AP Sleeping Indian LLC
Address: PO Box 518
Allenspark, CO 80510
Sample ID: AP Hemp
Matrix: Tincture
Labnumber: 21G0038-01

Total mass or volume per unit (g or mL): 30

Density (g/mL): .967

Terpene Profile

Test Conditions: 21°C

Extraction Technician: SH

Analytical Chemist: CB

Extraction

Date(s)

7/7/2021

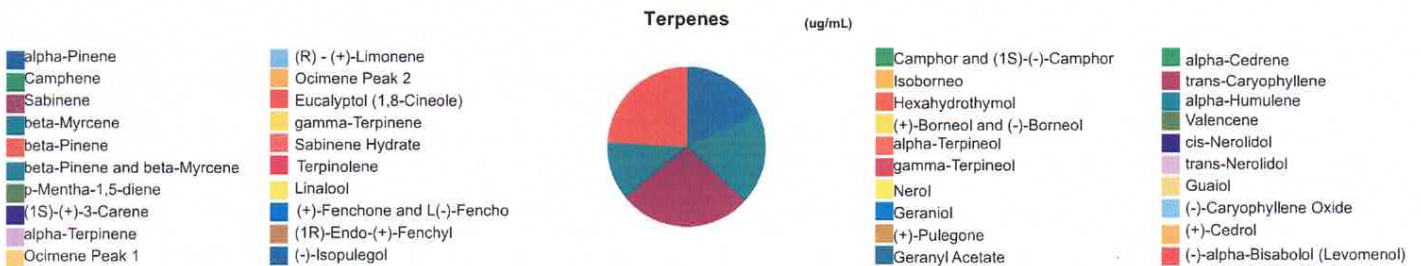
Analysis

Date(s)

7/7/2021

Terpene (GC/MS)	Results	Terpene (GC/MS)	Results
	ug/mL		ug/mL
alpha-Pinene	841	Isoborneol	
Camphene		Hexahydrothymol	
Sabinene		(+)-Borneol and (-)-Borneol	
beta-Myrcene	886	alpha-Terpineol	
beta-Pinene		gamma-Terpineol	
p-Mentha-1,5-diene		Nerol	
(1S)-(+)-3-Carene		Geraniol	
alpha-Terpinene		(+)-Pulegone	
Ocimene Peak 1		Geranyl Acetate	
(R) - (+)-Limonene		alpha-Cedrene	
Ocimene Peak 2		trans-Caryophyllene	1260
Eucalyptol (1,8-Cineole)		alpha-Humulene	555
gamma-Terpinene		Valencene	
Sabinene Hydrate		cis-Nerolidol	
Terpinolene		trans-Nerolidol	
Linalool		Guaiol	
(+)-Fenchone and L(-)-Fenchone		(-)-Caryophyllene Oxide	
(1R)-Endo-(+)-Fenchyl		(+)-Cedrol	
(-)-Isopulegol		(-)-alpha-Bisabolol (Levomenol)	1130
Camphor and (1S)-(-)-Camphor			

Blank results indicate the compound was below the limit of detection.



Reporting limit is roughly 100 ug/g depending on amount extracted.

Gary Brook - Laboratory Director - 7/8/2021

Reporting Limits will vary based on sample extraction weight used for the analysis.

The results of this report are based solely on the sample submitted and cannot be reproduced. Decision Rule: Measurement uncertainty is not accounted for in the reported values.

Results are based solely on calculated numbers. Altitude Consulting makes no Statements of conformity. Pesticide, metal, and microbial analyses are subcontracted to ISO 17025 laboratories.